



Chris Gent | Landscape Studio

| Projects, Park |

Urban Design | Landscape Architecture

Framework Plans
Chicago Park District

Design | Lead:

- Write the Request for Proposal and select design firm
- Work with Consultant or in-house staff to develop a framework plan meeting the community's and the Park District's needs
- Led public involvement process: elected officials, neighborhood organizations and community members

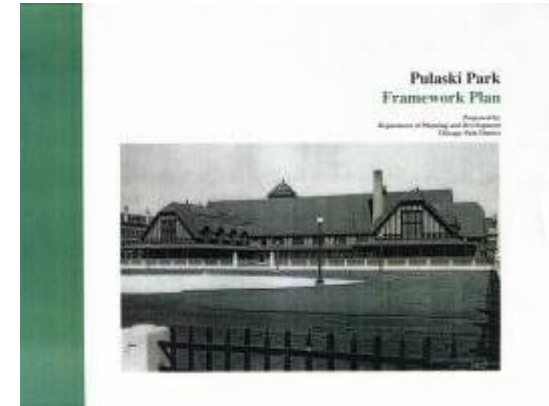
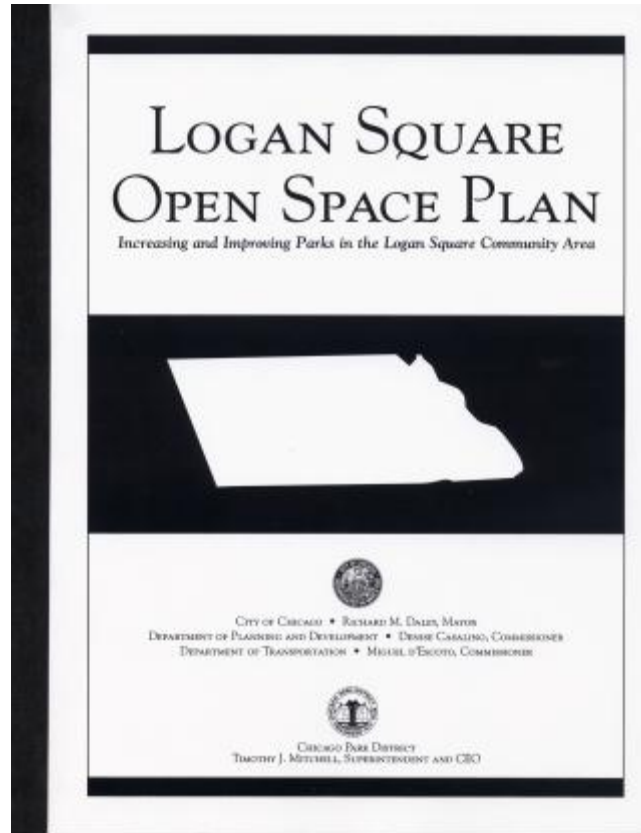
Chris Gent | Landscape Studio

Client: Chicago Park District

Project Dates: Varies

Budget: Varies

Design Firm: In-House



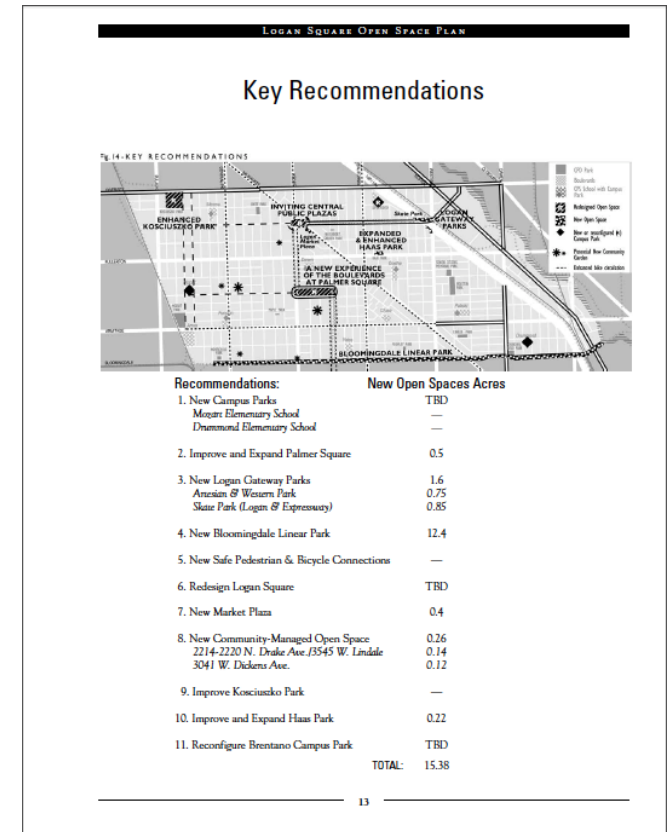
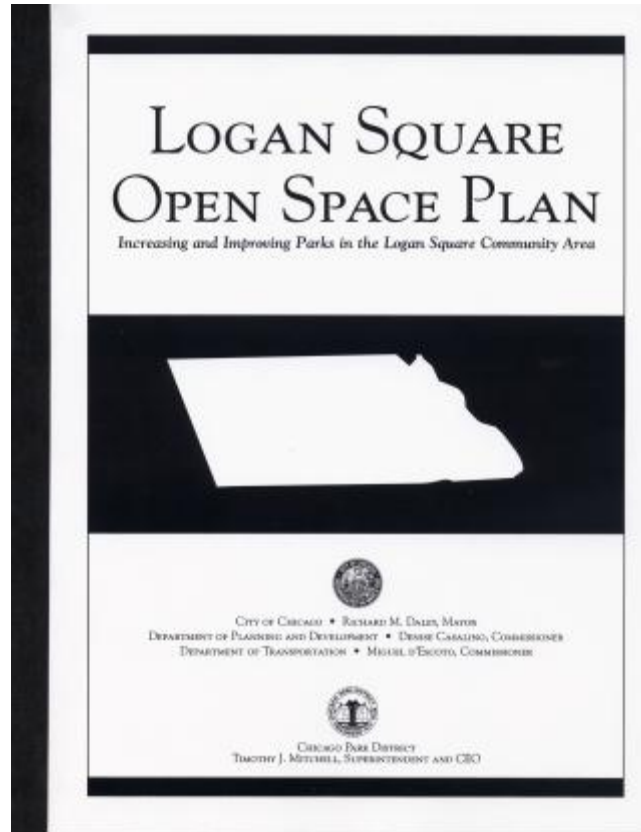
A Framework Plan is a tool used to create a comprehensive vision of future development. It outlines specific long-range changes to an existing park and suggests how to accomplish these tasks. Historical research and input from public and private interest groups build the foundation of the framework plan. Design proposals include improvement to land use, access, landscape, and park amenities. The framework plan serves as a guide for evaluating future proposals and builds support for future development.



Framework Plans
Chicago Park District

Chris Gent | Landscape Studio

Client: Chicago Park District
Project Dates: Varies
Budget: Varies
Design Firm: In-House



Logan Square Open Space Study. In partnership with the City of Chicago's Department of Planning and Development, worked with the community to develop innovative new open space ideas for one of Chicago's most underserved communities. Of the eleven key recommendations in the plan, seven have been, or are being, implemented, including several new Campus Parks, improving and expanding Palmer Square, creating new Logan Gateway Parks/Skate Park, the improvement and expansion of Haas Park, and the construction of the 606 Park (the Bloomingdale Trail).

http://www.cityofchicago.org/city/en/depts/dcd/supp_info/logan_square_openspaceplan.html



Chris Gent | Landscape Studio

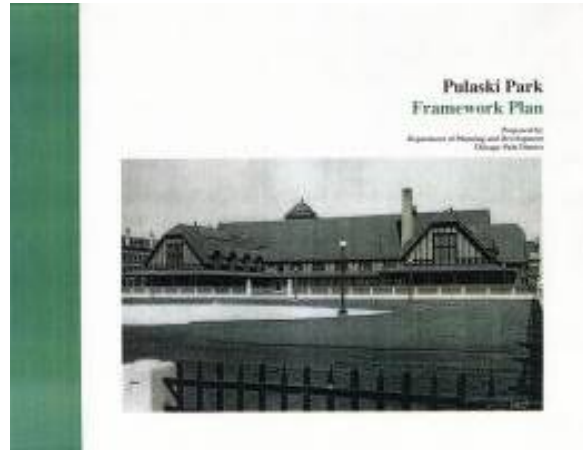
Urban Design | Landscape Architecture

| Projects, Park |

Framework Plans
Chicago Park District

Chris Gent | Landscape Studio

Client: Chicago Park District
Project Dates: Varies
Budget: Varies
Design Firm: In-House



Community Park Framework Plans. Community based plans developed with assistance from in-house staff: Skinner Park, Nichols Park, Jesse Owens Park, Brown Memorial Park and Pulaski Park
http://www.chicagoparkdistrict.com/assets/1/7/Pulaski_Park_2003.pdf



Chris Gent | Landscape Studio

| Projects, Park |

Urban Design | Landscape Architecture

Framework Plans
Chicago Park District.

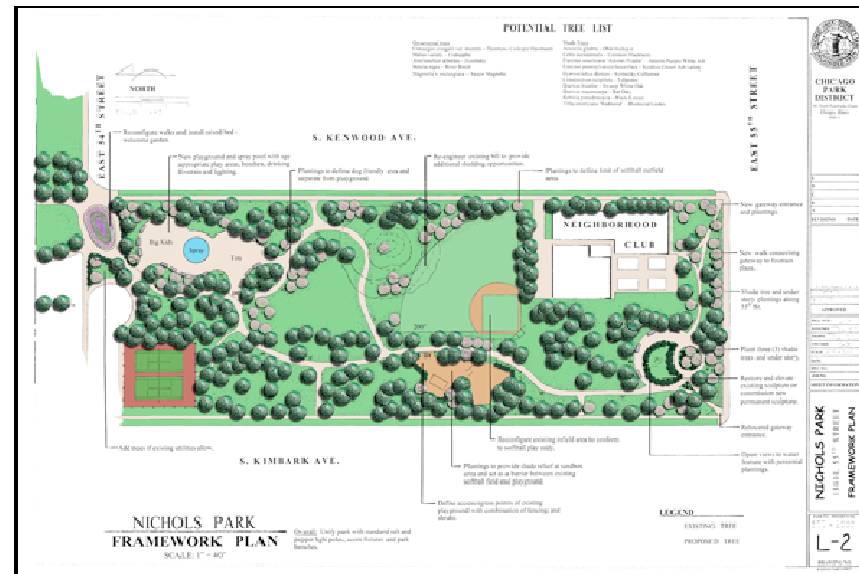
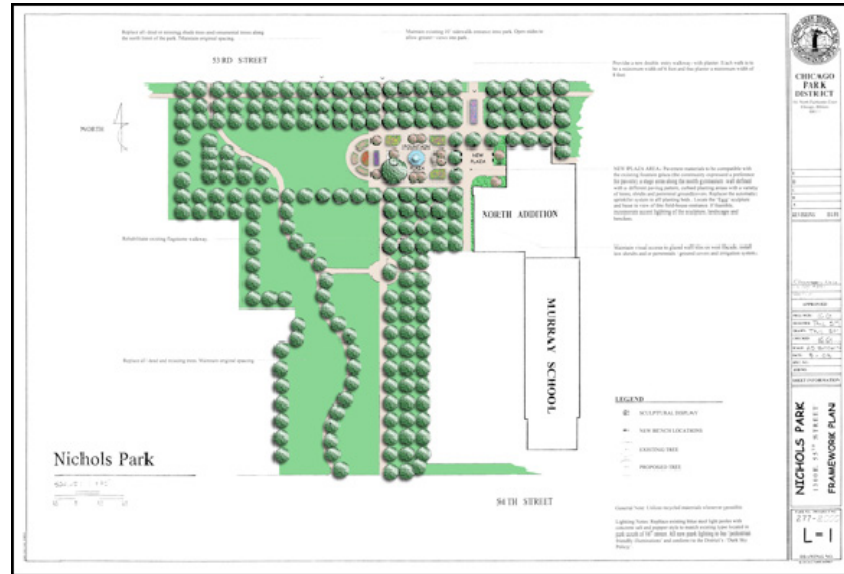
Chris Gent | Landscape Studio

Cieint: Chicago Park District

Project Dates: 2002 -2003

Budget: NA

Design Firm: CPD In-house Staff





Chris Gent | Landscape Studio

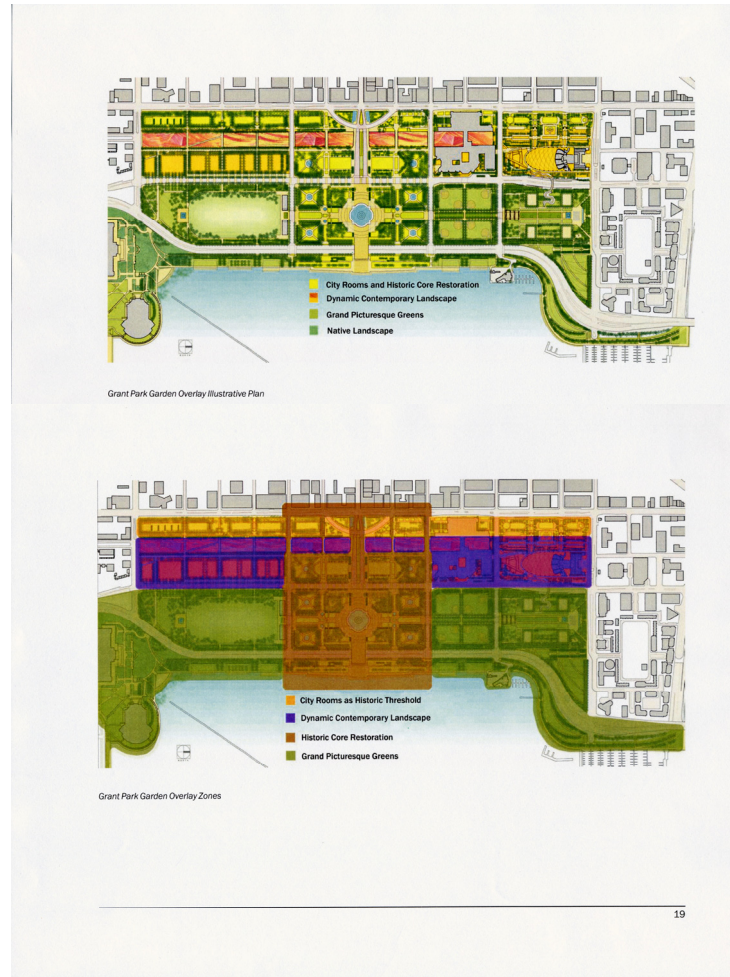
| Projects, Park |

Urban Design | Landscape Architecture

Framework Plans
Chicago Park District

Chris Gent | Landscape Studio

Client: Chicago Park District
Project Dates: 2002
Budget: Varies
Design Firm: Gustafson Guthrie
Nichol



Grant Park Garden Overlay. Hired consultant to develop a garden perspective to enhance and activate the “rooms” of Grant Park. Gained consensus for the project parts between members of the park district management with, sometimes, conflicting goals and visions. The outcome of the plan was a document that outlined design parameters to guide the future development of Grant Park. It was not the intent of the document to specifically design individual Garden spaces.



Chris Gent | Landscape Studio

Urban Design | Landscape Architecture

| Projects, Park |

Framework Plans
Chicago Park District

Chris Gent | Landscape Studio

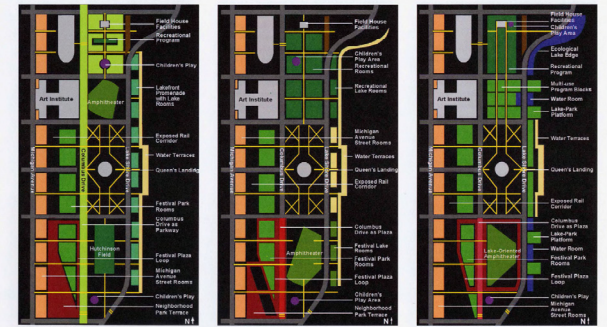
Client: Chicago Park District

Project Dates: 2002

Budget: NA

Prime Consultant: Harza Architects and
Engineers

Lead Design Consultant: Hargreaves
Associates



Grant Park. Strategically managed a year and a half community process resulting in the development of a 10 to 20-year vision for the 280-acre park considered to be Chicago's "front yard".

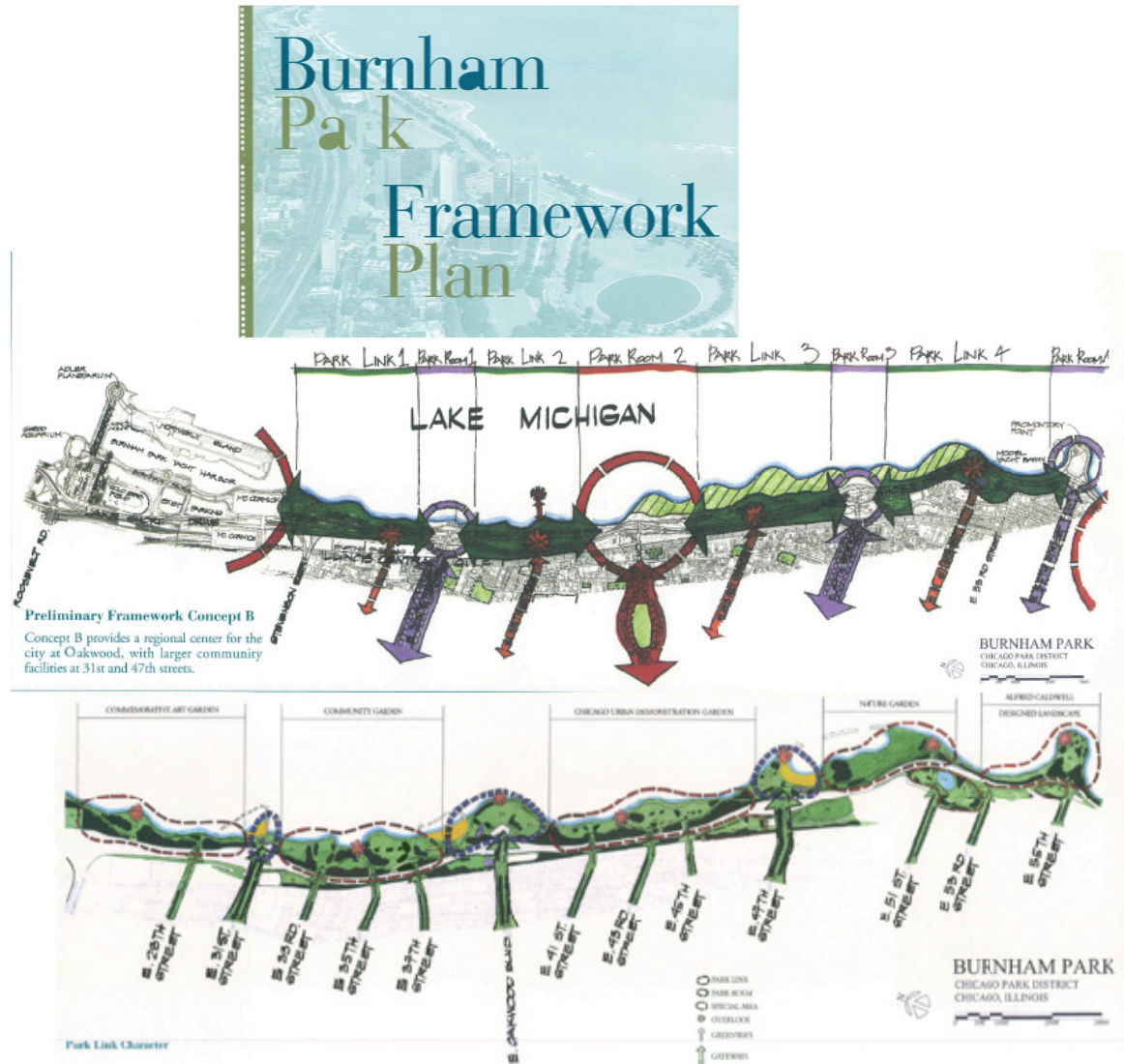
http://www.chicagoparkdistrict.com/assets/1/23/Grant_Park_Framework_Plan.pdf



Framework Plans
Chicago Park District

Chris Gent | Landscape Studio

Client: Chicago Park District
Project Dates: 1999
Budget: NA
Prime Consultant: Bauer Latoza Studio



The **Burnham Park Framework Plan**. Worked with the community and consultants over six months to complete the plan for a narrow four and a half mile long park along Lake Shore Drive, which was cut off from the Bronzeville neighborhood to the west by railroad tracks. Key to the plan was to improve existing connections to the neighborhood and establish additional connections every quarter of a mile along with a series of activity nodes and safe, accessible landscaped links.



Framework Plans
Chicago Park District

Chicago Park District
Chris Gent | Landscape Studio

Client: Chicago Park District
Project Dates: 1991 -1995
Budget: NA
Design Firm: CPD In-house Staff



http://www.chicagoparkdistrict.com/assets/1/23/Lincoln_Park_Framework_Plan.pdf

Lincoln Park. Developed the goals, objectives and overall vision for the 1208 acre park in conjunction with the Park District's Planning Department. Served as the Department of Landscape Architecture's representative to the Steering Committee of public and private interest groups.