



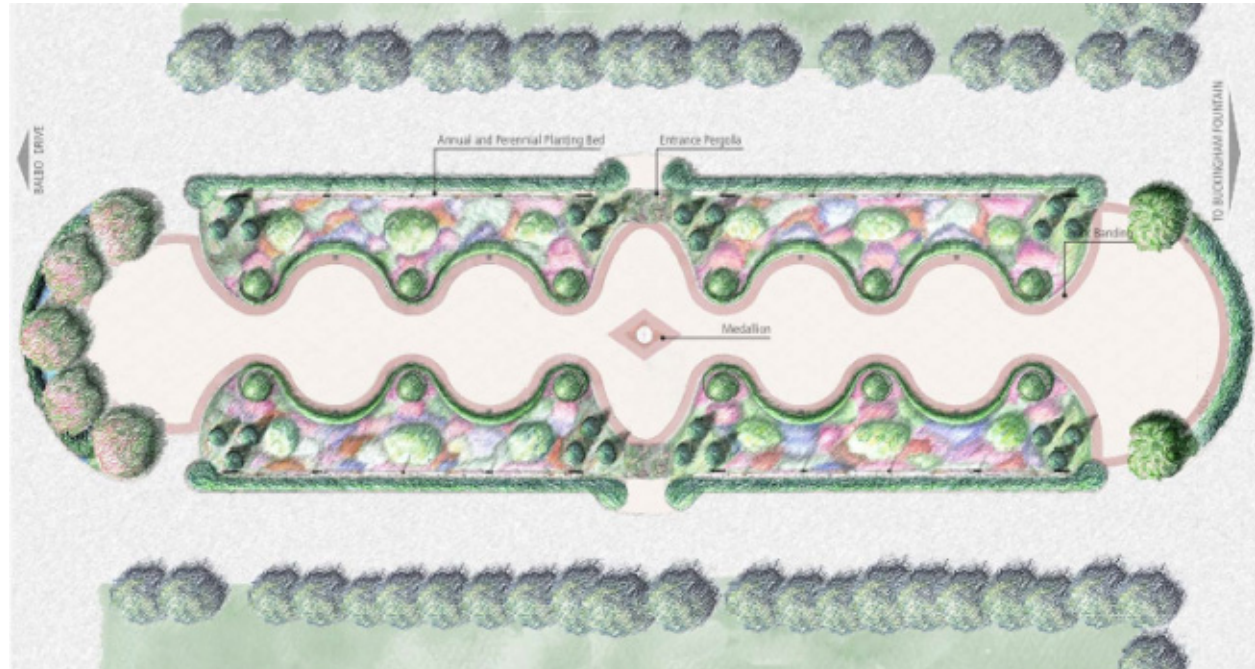
## Tiffany Celebration Garden Chicago Park District

### Design | Lead:

- Hire the Landscape Architecture firm to develop pro bono concept design and support material to meet with the Tiffany Foundation
- Present Proposal to the foundation.
- Review and direct consultant's work
- Coordinate reviews with internal departments

### Chris Gent | Landscape Studio

Client: Chicago Park District  
Project Date: 2008  
Budget: \$1,250,000  
Design Firm: Hoerr Schaudt



### Tiffany Celebration Garden: Plan

Scale: 1" = 30'

THE TIFFANY & CO. FOUNDATION



HOERR SCHAUDT

landscape architects

In 2008, a \$1.25 million grant from the Tiffany & Co. Foundation was awarded to the Chicago Park District to transform Grant Park's south rose garden into a formal garden and event space adjacent to Buckingham Fountain. Where the old rose garden was viewed only from the edges, the new garden engages visitors by providing a central ceremonial promenade bordered by serpentine garden beds full of over 7500 annuals and perennials, shaped evergreens, flowering trees, cascading vines and flowering shrubs. The garden highlights views of the city's most beloved treasures: Buckingham Fountain, Lake Michigan, and the stunning view of Museum Campus.



# Chris Gent | Landscape Studio

Urban Design | Landscape Architecture

| Projects, Park |

**Tiffany Celebration Garden  
Chicago Park District**

Chris Gent | Landscape Studio



Before



After



# Chris Gent | Landscape Studio

Urban Design | Landscape Architecture

| Projects, Park |

## Tiffany Celebration Garden Chicago Park District

Chris Gent | Landscape Studio



After



After